

**DREAM (phospho Ser63) Polyclonal Antibody**  
**Catalog # AP67862****Specification**

---

**DREAM (phospho Ser63) Polyclonal Antibody - Product Information**

Application	WB, IHC-P, IF
Primary Accession	<a href="#">Q9Y2W7</a>
Reactivity	Human, Mouse
Host	Rabbit
Clonality	Polyclonal

**DREAM (phospho Ser63) Polyclonal Antibody - Additional Information****Gene ID** 30818**Other Names**

KCNIP3; CSEN; DREAM; KCHIP3; Calsenilin; A-type potassium channel modulatory protein 3; DRE-antagonist modulator; DREAM; Kv channel-interacting protein 3; KCHIP3

**Dilution**

WB~~Western Blot: 1/500 - 1/2000. Immunohistochemistry: 1/100 - 1/300. Immunofluorescence: 1/200 - 1/1000. ELISA: 1/20000. Not yet tested in other applications.

IHC-P~~N/A

IF~~1:50~200

**Format**

Liquid in PBS containing 50% glycerol, 0.5% BSA and 0.09% (W/V) sodium azide.

**Storage Conditions**

-20°C

**DREAM (phospho Ser63) Polyclonal Antibody - Protein Information****Name** KCNIP3**Synonyms** CSEN, DREAM, KCHIP3**Function**

Calcium-dependent transcriptional repressor that binds to the DRE element of genes including PDYN and FOS. Affinity for DNA is reduced upon binding to calcium and enhanced by binding to magnesium. Seems to be involved in nociception (By similarity).

**Cellular Location**

Cytoplasm. Cell membrane; Lipid-anchor. Endoplasmic reticulum. Golgi apparatus. Nucleus. Note=Also membrane-bound, associated with the plasma membrane (PubMed:15485870). In the presence of PSEN2 associated with the endoplasmic reticulum and Golgi. The sumoylated form is present only in the nucleus.

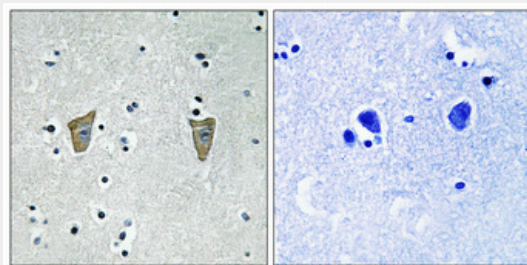
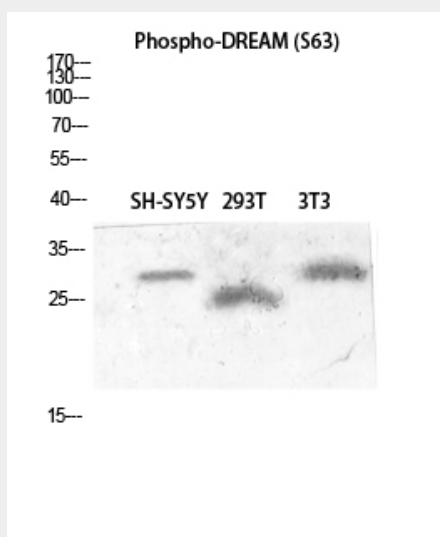
**Tissue Location**

Highly expressed in brain. Widely expressed at lower levels. Expression levels are elevated in brain cortex regions affected by Alzheimer disease.

**DREAM (phospho Ser63) Polyclonal Antibody - Protocols**

Provided below are standard protocols that you may find useful for product applications.

- [Western Blot](#)
- [Blocking Peptides](#)
- [Dot Blot](#)
- [Immunohistochemistry](#)
- [Immunofluorescence](#)
- [Immunoprecipitation](#)
- [Flow Cytometry](#)
- [Cell Culture](#)

**DREAM (phospho Ser63) Polyclonal Antibody - Images****DREAM (phospho Ser63) Polyclonal Antibody - Background**

Calcium-dependent transcriptional repressor that binds to the DRE element of genes including PDYN and FOS. Affinity for DNA is reduced upon binding to calcium and enhanced by binding to magnesium. Seems to be involved in nociception (By similarity).